

# Cards and Fobs

There are currently a number of different technologies involved in access control cards and fobs. This document aims to inform the reader of what cards or fobs are appropriate for different reading technologies.

## What is a card / fob?

Each card or fob is programmed with a unique identifier which may be either a batch number or a site coded number. A number of different technologies can use these cards / fobs.

## RFID

Radio Frequency Identification Devices (RFID) cards / fobs are the most common devices used in today's access control systems. They are, in the main, passive devices (no batteries). When presented to a card reader the card is powered and transmits its unique identifier.

## Proximity RFID

Proximity is the most commonly used card / fob technology today. Operating at 125 kHz the card / fob, when powered by the reader, transmits its unique identifier to the access control system. The system in turn will make a decision on access based on the access rights of the card holder.

## Contactless Smart Card RFID

Contactless smart cards operate on a much higher frequency (13.56MHz). These cards / fobs have a memory capacity that is divided into sectors that are programmed for specific applications e.g. access control, cashless vending, car parking, road tolling, etc.

## What is a batch coded card/ fob?

A batch coded card / fob is pre-programmed with a number that is unique and sequential.

## What is a site coded card/fob?

A site coded card / fob is pre-programmed with a number that is unique and sequential. In addition the card contains a unique site code.

## Important Information for your cards / fobs

---

- When re-ordering cards / fobs you will need to be able to answer the following questions:
- Is it a card or a fob?
- What technology does the card / fob use?
- What is the brand of the card / fob?
- Is the card / fob site or batch coded?

# Cards & Fobs

	ACTProx Fob	ACTProx ISO	ACTProx HS	ACTProx Duo	HIDProx Fob	HIDProx ISO	HIDProx HS	HIDProx Duo	Micro Prox	ACT Card	ACTpro mifare Fob	ACTpro mifare Card	iClass Cards	HID mifare 1431	ACT 433TX	ACT 433TX prox
Token Reader	Fob	Card	Card	Card	Fob	Card	Card	Card	Tag	Card	Fob	Card	Card	Card	Fob	Fob
<b>Standalone</b>																
ACT5prox	X	X	X	X												X
<b>ACTsmart2</b>																
1070	X	X	X	X												X
1070PM	X	X	X	X												X
1080	X	X	X	X												X
<b>ACTpro-X</b>																
1030	X	X	X	X	X	X	X	X	X					X		X
1030PM	X	X	X	X	X	X	X	X	X					X		X
1040	X	X	X	X	X	X	X	X	X					X		X
1050	X	X	X	X	X	X	X	X	X					X		X
<b>ACTpro</b>																
1010				X				X		X*				X		
<b>ACTpro mifare</b>																
1040											X	X	X			
1050											X	X	X			
<b>HID</b>																
iClass R10													X			
iClass R40													X			
iClass RP40													X			
<b>Long Range</b>													X			
ACT 433RX															X	X

\*not encoded

# Proximity Cards & Fobs (125 kHz)

## ACTProx Fob

### Features

- ACT proximity key fob
- max range of up to 8cm
- extremely robust
- supplied in pack of 10

**Product Code** ACTProx Fob-B



All ACT and HID cards & fobs are batch coded by default. ACT recommends using batch cards for simpler system enrollment.

## ACTProx ISO Card

### Features

- ACT ISO proximity card
- suitable for printing
- max range of up to 8cm
- supplied in pack of 10

**Product Code** ACTProx ISO-B



HID cards and fobs can be encoded with a unique site code. When ordering subsequent cards & fobs this site code is required. Site codes cards & fobs have a 2 week lead time.

## ACTProx HS Card

### Features

- ACT Half Shell proximity card
- not suitable for printing
- max range of up to 8cm
- supplied in pack of 10

**Product Code** ACTProx HS-B

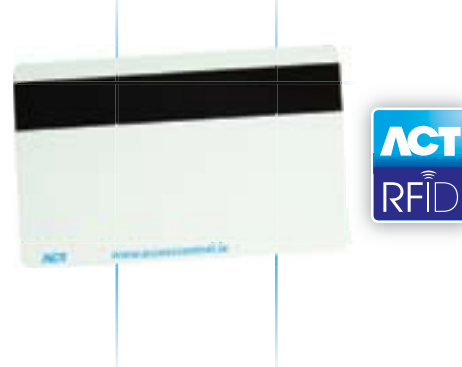


## ACTProx Duo Card

### Features

- ACT Duo Prox Card (prox & mag stripe)
- suitable for printing
- max range of up to 8cm
- supplied in pack of 10

**Product Code** ACTProx Duo-B



# Proximity Cards & Fobs (125 kHz)

## HIDProx Fob



### Features

- HID RFID proximity key box
- max range of up to 6 cm
- supplied in pack of 10 (batch)

**Product Code** HIDProx Fob-B (batch)



## HIDProx ISO Card



### Features

- HID RFID ISO proximity card
- max range of up to 8 cm
- suitable for printing
- supplied in pack of 10 (batch)

**Product Code** HIDProx ISO-B (batch)



## HIDProx HS Card



### Features

- HID RFID Card 11 (Half Shell proximity card),
- max range of up to 8 cm
- not suitable for printing
- supplied in pack of 10 (batch)

**Product Code** HIDProx HS-B (batch)



## HIDProx Duo Card



### Features

- HID RFID proximity & mag stripe card
- max range of up to 8 cm
- suitable for printing
- supplied in pack of 10 (batch)

**Product Code** HIDProx Duo-B (batch)



## Micro Prox Tag



### Features

- HID RFID adhesive proximity tag
- max range of up to 8 cm
- not suitable for printing
- supplied in pack of 10 (batch)

**Product Code** HID Micro Prox



# Contactless Smart Card Cards & Fobs (13.56 MHz)

## ACTpro mifare Fob

### Features

- for use with ACTpro mifare 1040 / 1050
- proximity mifare 1KB fob
- max range of 3cm
- not suitable for printing
- supplied in packs of 10

**Product Code** ACTpro mifare 1KB Fob



## ACTpro mifare Card

### Features

- for use with ACTpro mifare 1040 / 1050
- prox mifare 1KB card (prox & mag stripe)
- max range of 5cm
- suitable for printing
- supplied in packs of 10

**Product Code** ACTpro mifare 1KB Card



## HID iClass cards

### Features

- for use with HID iClass Readers
- suitable for printing
- max range of 5cm

**Product Code** HID i class 2k card  
HID i class 16k card



## HID mifare 1431

### Features

- for use with HID iClass Readers
- prox mifare 1KB card (prox & mag stripe)
- suitable for printing
- max range of 5cm

**Product Code** HID mifare 1431



## Magnetic Swipe Card

### ACT Card

#### Features

- swipe card (magnetic strip)
- suitable for printing
- ACT logo as standard (blank on request)
- supplied in packs of 10

#### Product Code

ACT Card-B (Batch)



## Radio Transmitters

### ACT 433TX

#### Features

- high security rolling code transmission
- range of up to 50m (site dependant)
- 2 button battery powered radio devices
- battery used: two CR2032

**Product Code** ACT 433TX



### ACT 433TXprox

#### Features

- all the functions of the ACT 433TX
- built in ACT proximity fob for use with ACTsmart2 & ACTpro-X readers

**Product Code** ACT 433TXprox

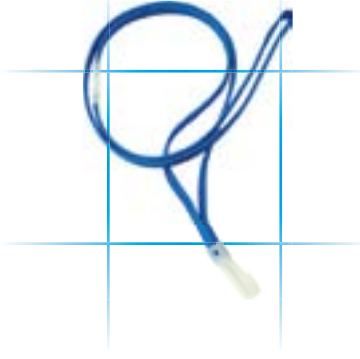


# Cards & Fobs Accessories

## Lanyard

- use with ACT cardholder to secure card around the neck
- quick safety release clip

**Product Code** ACT Lanyard

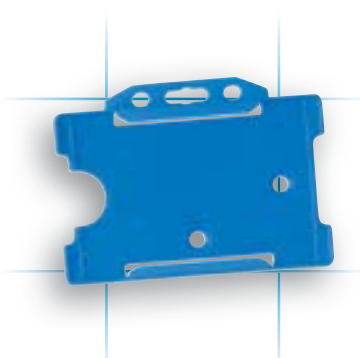


## Cardholder

### Features

- plastic holder for cards
- attach to lanyard or clip

**Product Code** ACT Cardholder



## Clips

### Features

- use with the ACT cardholder to secure card to clothing

**Product Code** ACT Clip



## Yo Yo

### Features

- Elasticated holder for cards and fobs

**Product Code** ACT YO-YO



# Card Printing Bureau Services

## Card ID

### Features

- personalised printing e.g. employee name, photo, department, etc

**Product Code** ACT ID

## Card Logo

### Features

- non-personalised printing e.g. company logo, address, phone, etc.

**Product Code** ACT Logo

## Encoding

### Features

- to add non standard encoding to a card

**Product Code** Encoding

# Cards & Fobs