

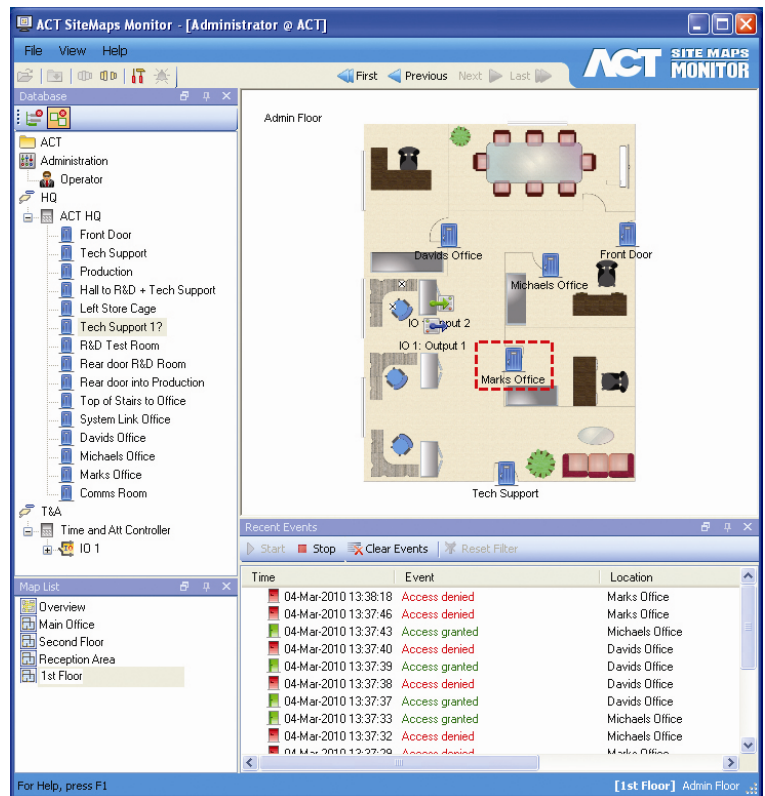
ACT Sitemaps allow the operator to visually monitor access control points and IO modules on a graphical representation of the site.

## What are Sitemaps

As normal door events and alarms are generated by the access control system the status is updated live on the map.

ACT Sitemaps display normal door activity including all alarm conditions such as a door forced, door ajar event, etc. The most recent events are highlighted to make them easily identifiable to the operator.

Each door on the map may be linked to a different map which is useful when there are several different buildings on a site, the building has multiple floors or the operator does not know the building very well.



## Requirements

ACTWin pro 2.7 & later

## How can I create a Sitemap?

Sitemaps are created using the ACT Sitemap editor. The access points and individual inputs and outputs can be placed in the appropriate location on the map, via a simple drag and drop facility. These points can then be customised to suit the operator by changing the colour or text, or by associating them to additional maps or a relevant image, such as a photograph of the access point or a technical drawing of the device.


## How can I use Sitemaps to monitor my site?

The Sitemap monitor allows you to monitor your site in real time. The recent events panel displays events as they occur and the associated points are updated to reflect the event. The operator can perform actions directly on the door, by right clicking on the door symbol, such as viewing an associated map / images or running a command such as lock or unlock the door.

## Create a Sitemap

In Sitemap editor connect to the access control database (File -> Open and choose the correct database). The left panel will display the system tree which lists the controllers, doors and IO modules on the site.

You will now need to import the maps which represent each building / floor that you wish to monitor. The map must be in JPG, BMP or gif format.

To add a map select  at the top of the map list pane. This will take you to the "Welcome to the New Map Wizard". On completion the new map will be visible in the map list, which is located below the system tree.




To add doors to the map simply drag and drop the relevant doors from the system tree. You can use the properties section to change the description, colour, font, appearance and associated image and map as relevant.

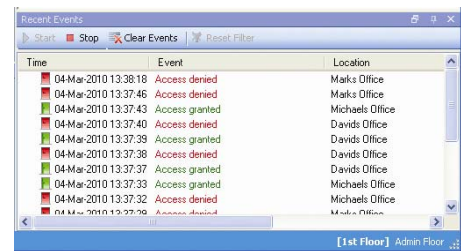
When you have added all your doors save the map (File -> Save)

## Monitor your site using Sitemaps

The Sitemap Monitor is used to monitor / view your site. It is launched from within ACTWin (Reports -> Site Map Monitor).

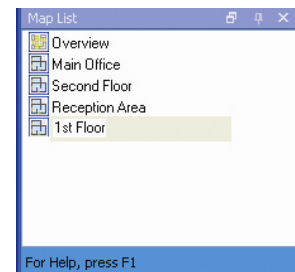
### View Live Events

Press the  icon on the tool bar to connect to the controller and view live events.



### Map View

When the database is first opened the default view will be the first map. To view another map select the preferred map from the map list.



### Door Management

Right click on any door to view the associated image or map, to issue commands to the door such as lock, pass or unlock or you can use the set filter option to only focus on events for the doors with set filter enabled.