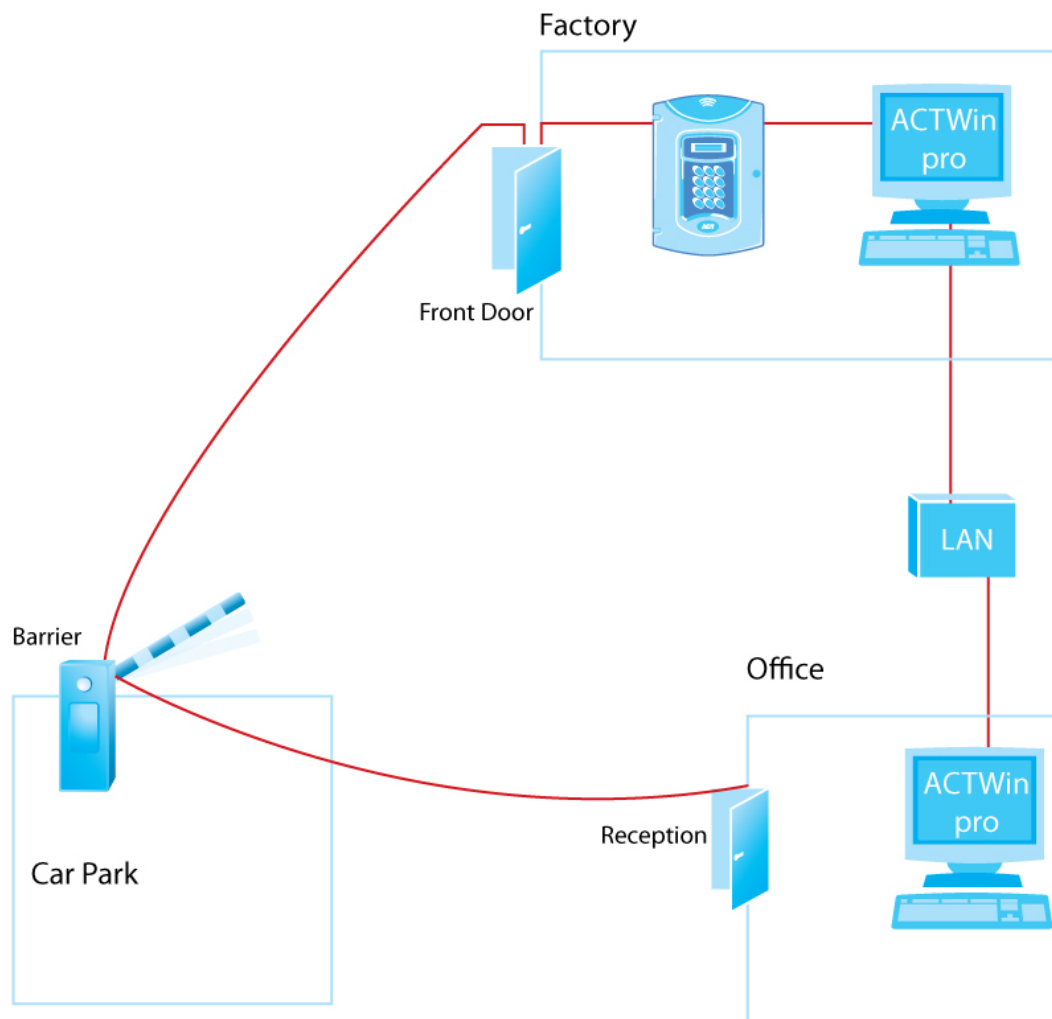


## Configuring Multi-Tenant on ACTWin pro

The Multi-Tenant feature is available as an extra module for ACTWin pro Version 2.2 and later. It allows large systems, with a large number of doors, to be broken down into smaller, more manageable systems (or sites). The hardware (controllers, doorstations etc) are all connected as normal to the system. ACTWin pro database users will only be allowed to view and configure users that belong to their site. They will not see activity on other sites.

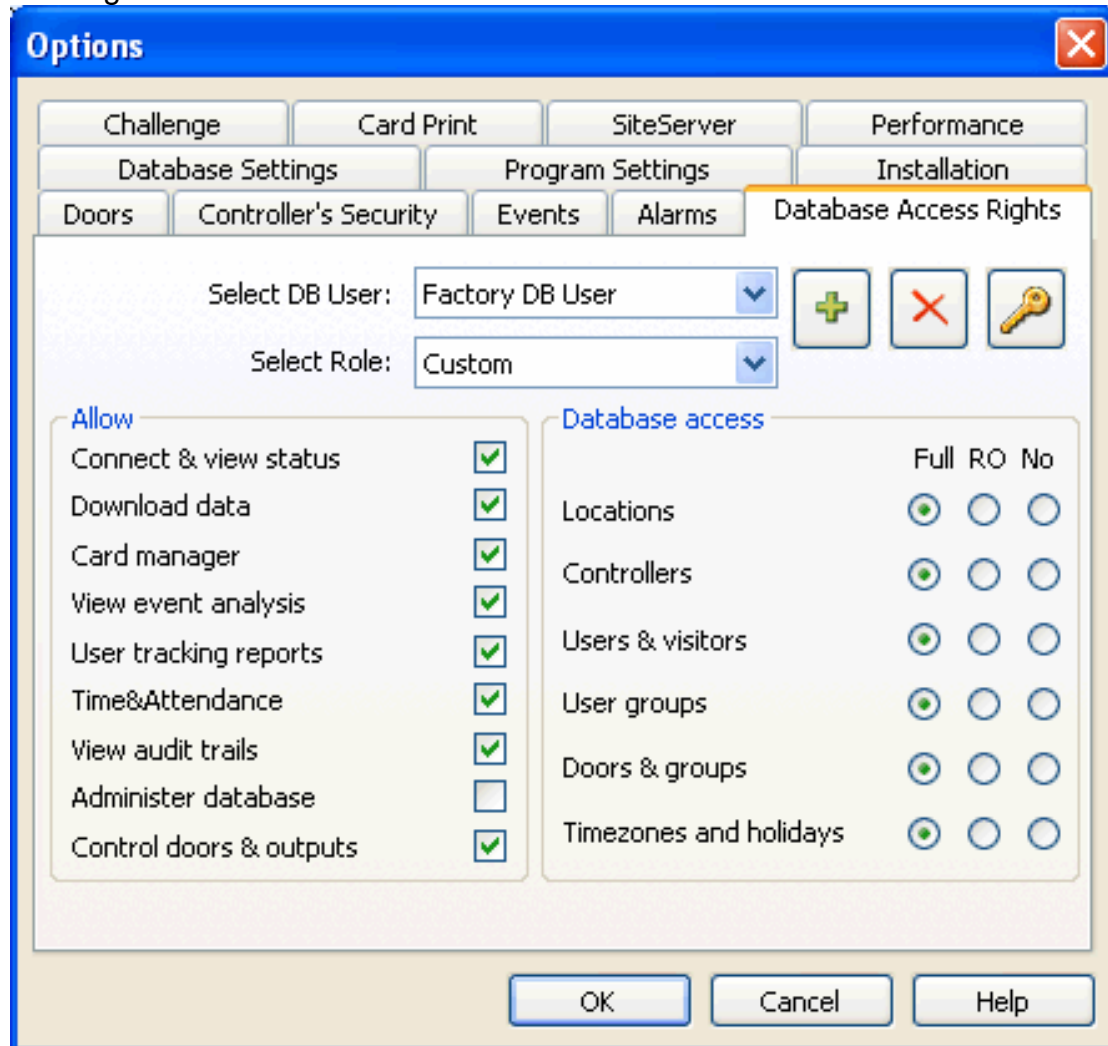


This application note will describe how to configure a simple system, as in the illustration above, into a multi-tenant application. Two buildings share the same ACT hardware and ACTWin pro database. They are also on the same Local Area Network (LAN). The database (DB) users in the factory do not want to see the doors and events in the office and vice versa. The car park is shared between both buildings.

# Application Note AN011

## Step 1 – Create Database users

Two database users must be created by the administrator, one for each building.



# Application Note AN011

## Step 2. - Create Sites

Click on the Sites icon and create a new site. Call it Factory and assign the operator to Factory. Repeat for the Office.

Site Number  
1

Site Name  
Factory

Operators  
Office DB User

Site Operators  
Factory DB User

>  
>>  
<<  
<

## Step 3 – Create Doors

Create doors on the database as you would normally. Assign the doors in each building to the appropriate site. The car park door is assigned to both sites as both database users want to control this door.

Door Number  
2  Enabled

Name  
Car Park

Controller  
Controller 1

Local Door #  
2

**Timers**

Relay timer	5
Door Ajar timer	60
AUX output	2
OP2 timer	5
OP3 timer	5
GPO timer	5
Tracking Delay timer	0
Relay Delay timer	0
Extended Relay timer	30

**Operation**

- Anti-tailgate
- Silent operation
- Chime
- Free exit
- Interlock
- Release button
- Exit PIN's
- Guest button
- Exit PIR
- Fail-safe Relay
- Toggle operation
- Intruder Panel

**Aux Relay**

- Door ajar
- Door forced
- Door open
- Access denied
- Access granted
- Duress code used
- Exit granted
- Exit denied
- Follow main relay
- Arm Intruder Panel

**Reporting**

- Door ajar
- Door forced
- Read errors
- Exit button used
- Door opened
- Door closed
- Mains fault

**Actions**

Unlock Door	Not Active
Lock Door	Not Active
PIN required	Not Active
Any Card	Not Active
OP2 Active	Not Active
OP3 Active	Not Active
AUX Active	Not Active
PIN Only	Not Active
PIN or Card	Not Active

**Floor Group**  
No Floors

**Sites**

- Factory
- Office

# Application Note AN011

## Step 4. – Create Users

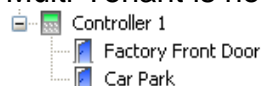
Create users as before and assign them to the appropriate sites. If some users need access to both sites then tick both sites.

The screenshot shows a user creation form with the following sections:

- User Number:** Input field with '1', a checked 'Enabled' checkbox, and a 'Group' dropdown set to 'Full Access Group'.
- Identification:** Fields for PIN Code ([Not Set]), Cards (0101828304, 00001), and buttons for 'Change PIN' and 'Change Card'.
- User Options:** A list of checkboxes including Toggle Relay, Extended Relay, Activate OP2, Activate OP3, Arm/Disarm, Monitor User, Verify Visually, and Visitor Card.
- Validity Period:** 'From' and 'till' date pickers both set to 27/02/2006.
- User Fields:** A table with fields for Employee Number (3434), Extension (112), Car Registration (98G638), E-mail (worker@office.com), and Mobile (90990340).
- Sites:** Checkboxes for 'Factory' (unchecked) and 'Office' (checked).
- Photo ID and Signature:** Two sections, each with a 'None' placeholder and 'Change'/'Delete' buttons.

## Step 5

Continue creating user groups, timezones, door groups etc and assign them to the appropriate site. Login to the database as Factory database user. Only the doors in the factory and the car park are viewable. Only users allowed into the factory are displayed. Only events that occur in the factory are shown. Multi-Tenant is now configured.



## Muster Reports

If a fire event occurs, the muster report will be generated for each site. The report will be printed on the PCs default printer.

## Summary:

- 200 individual tenants
- Each tenant has its own doors, users, user groups and door groups which only they can edit
- Log events that occur to other tenants are not displayed
- Some users, doors etc. may be assigned to up to 16 tenants e.g. car parks and building management personnel can be shared between tenants
- When a fire occurs on one tenant, the muster report is only generated for users in that tenant